

HOPE'S CORNER

www.hopes-corner.org

Our Vision: We envision a community where no one is hungry.
Our Mission: We create a community that promotes the well-being of all by providing nutritious meals and warm showers in a caring and collaborative manner.

2022 SUMMARY

MEAL PROGRAM

Hope's Corner volunteers prepared and cooked healthy meals from scratch in the onsite kitchen on Wednesday and Saturday every week during 2022. We provided hot meals in takeout boxes plus bag lunches that included fresh fruit, cheese, protein bars, fruit cups, and more. In addition, a coffee and light breakfast service was offered every Monday morning in 2022.

MEAL SERVICE BY LOCATION:

75%
ONSITE

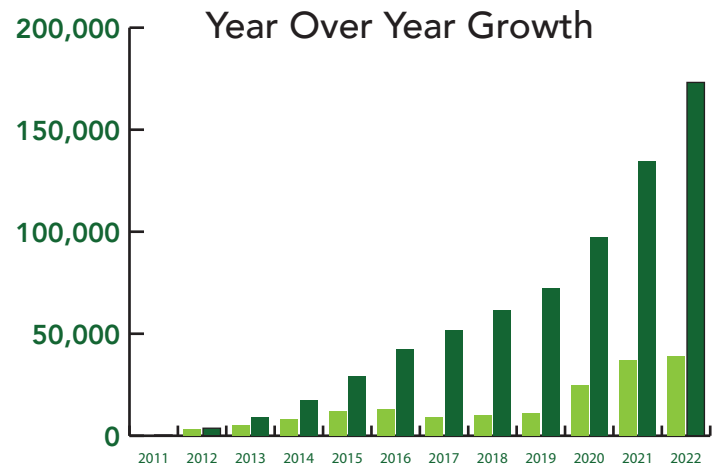
18%
MOUNTAIN VIEW
SAFE PARKING
PROGRAM

7%
DAY WORKER
CENTER OF
MOUNTAIN VIEW

MEALS PREPARED & SERVED:

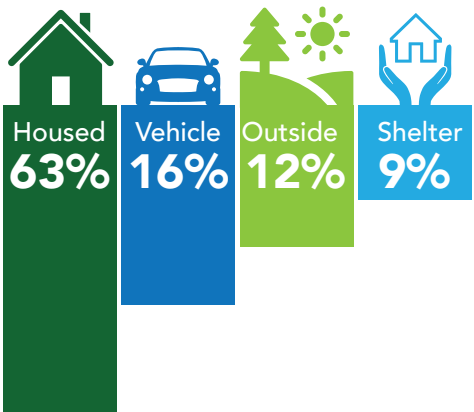


MEAL SERVICE BY DAY OF WEEK:



GUEST INFORMATION:

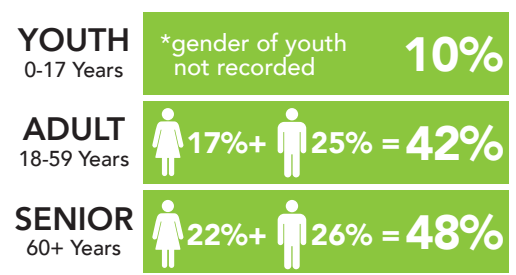
HOUSING STATUS



CITY OF RESIDENCE

- 61.8%** Mountain View
- 14.2%** Sunnyvale
- 8.4%** Palo Alto / EPA
- 8.1%** Other
- 5.2%** San Jose
- 2.3%** Undisclosed

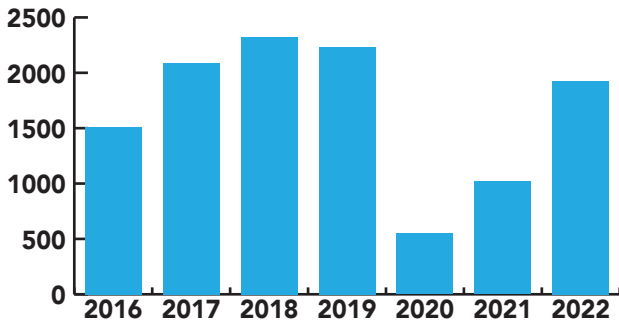
AGE & GENDER



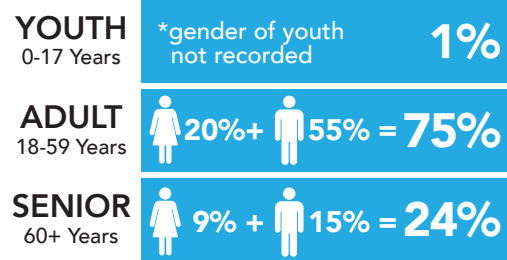
SHOWER, LAUNDRY & OTHER PROGRAMS

Hope's Corner continued to grow and expand services throughout 2022. We continued to recruit volunteers to help provide our guests with free goods and services. The shower and laundry program was and continues to be available to any unhoused individual in need. We also maintained a clothing closet for those who do not have enough or proper clothing.

SHOWERS PROVIDED



SHOWER PARTICIPANTS AGE & GENDER



LAUNDRY PROGRAM



594
Loads of Laundry

HOLIDAY PROGRAM



Over
2000
Toys & Gifts

BICYCLE PROGRAM



110
Bicycles

HAIRCUT EVENTS



132
Free Haircuts

VOLUNTEERS | FOOD DONORS | FINANCIAL CONTRIBUTORS

In 2022, volunteers logged over 12,000 hours of program service assistance for Hope's Corner. Without our volunteers, we wouldn't exist. From cooking, serving and delivering meals to assisting with laundry and shower services and much more. Our volunteers do so much for our guests and make it all happen. Please browse open volunteer positions and sign up online.

Food donors are the main contributors to our Meal Program. Items like meat, eggs, milk, peanut butter, juice, fresh fruits and vegetables are provided. Prepared meals are also donated from local corporate kitchens, convention centers and other venues with excess food. In 2022, there was an estimated donation value was well over \$185,000.

Hope's Corner relies solely on the support of donors to fund programs and pay for the expenses necessary to provide critical services. The majority of funding comes from the generosity of individual donors as well as grants. In 2022, we received nearly \$500,000 in funds to operate our programs.

THANK YOU



748 Mercy Street, Mountain View, CA 94041-2027 | (650) 254-1450
info@hopes-corner.org | Tax ID: 47-3754161